

Company :

Address :

Sample Name : CELL wood pallet

Date Received : JUL 07, 2014

Date Tested : JUL 07, 2014

**TESTING LABORATORY IS ACCREDITED BY:**

IEC/IECQ 17025 certificate of independent test laboratory approval

Certificate No. : 1.72.0031

ISO 17025 accredited in respect of laboratory is approved by TAF

Certificate No. : L0835-120910

ISO 9001 certificate is approved by TUV CERT certification body of TUV NORD Cert GmbH

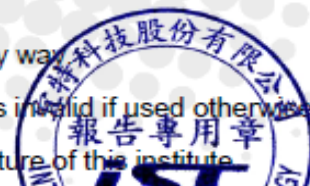
**WE HEREBY CERTIFY THAT:**

The test(s) shown in the attachment were conducted according to the indicating procedures. We assume full responsibility for the accuracy and completeness of these tests and vouch for the qualifications of all personnel performing them.

	Name	Signature	Date
Test Engineer	Yuhsing Liang	<i>Yuhsing Liang</i>	<i>Jul 08, 2014</i>
Manager	Injel Chen	<i>Injel Chen</i>	<i>Jul 08, 2014</i>

**NOTE :**

1. This report will be invalid if reproduced in part or altered in any way.
2. This report refers only to the specimen(s) submitted to test, and is invalid if used otherwise.
3. This report is ONLY valid with the examination seal and signature of this institute.



## 2. STATIC COMPRESSION TEST

### 2.1 TEST EQUIPMENT

Model	Serial Number	Calibration Date
LAB VAL-I 10KCT Compression Tester	311032	NOV 07, 2013

### 2.2 LABORATORY AMBIENCE CONDITION

Temperature : 25 °C ± 5 °C

Relative humidity : 65 % ± 5 % (RH)

### 2.3 REFERENCE DOCUMENT

The test is based on customer specification

### 2.4 TEST CONDITION

Unit is non-operating.

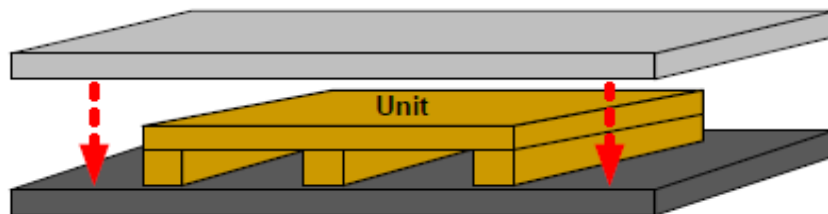
Compression load : 1500 kgf

Constant rate : 0.5 in/minute

Compression direction : Top to bottom

Compression test duration : 1 hour

Compression direction :



### 2.5 SUMMARY OF TEST

After testing, visual inspection showed no physical defect on unit.

## 2. STATIC COMPRESSION TEST

### 2.1 TEST EQUIPMENT

Model	Serial Number	Calibration Date
LAB VAL-I 10KCT Compression Tester	311032	NOV 07, 2013

### 2.2 LABORATORY AMBIENCE CONDITION

Temperature : 25 °C ± 5 °C

Relative humidity : 65 % ± 5 % (RH)

### 2.3 REFERENCE DOCUMENT

The test is based on customer specification

### 2.4 TEST CONDITION

Unit is non-operating.

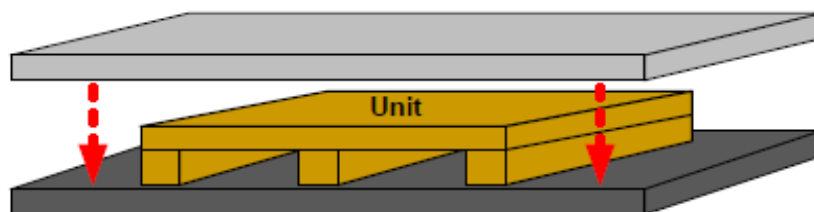
Compression load : 1500 kgf

Constant rate : 0.5 in/minute

Compression direction : Top to bottom

Compression test duration : 1 hour

Compression direction :



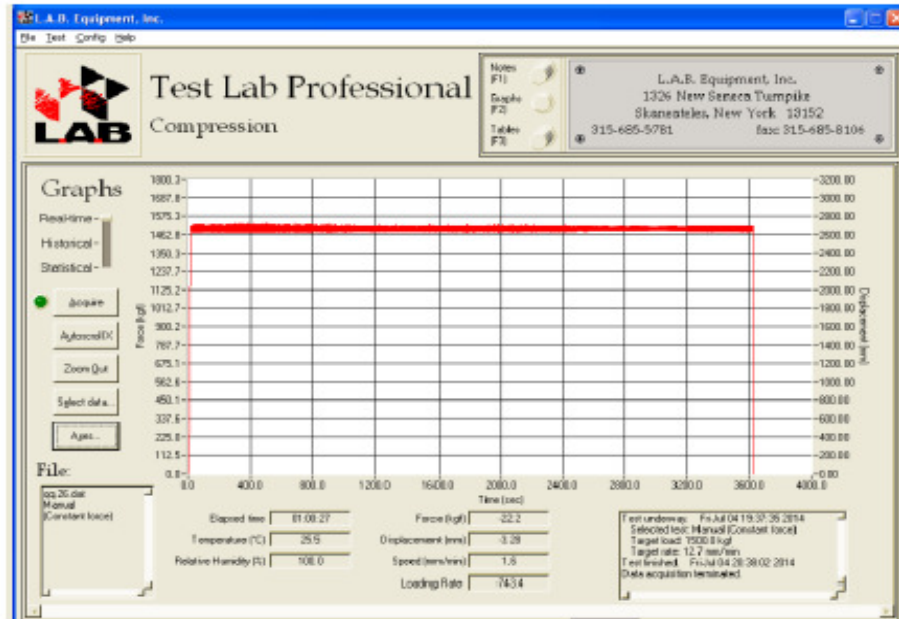
### 2.5 SUMMARY OF TEST

After testing, visual inspection showed no physical defect on unit.

**Attachment 2 : Photo of static compression test setup**



Attachment 4 : Graph of static compression test



**Safety**

- Emergency Stop
- Load Imbalance
- Upper Link
- Lower Link
- Run Enable

**Setup**

Manual: Constant force  
Cycling: None

	Target	Actual
Speed	12.7	0.0 mm/min
Critical Displ.	0.00	-3.28 mm
Load	1500.0	-10.6 kgf
Loading Rate	12.5	-1.5 kgf/min

**Control**

Automatic (selected)  
Manual

Home Platen  
Set Platen/Home  
Unload Load  
Unzero Displacement

Select Test  
Execute Test  
Monitor Test

Elapsed Time: 01:00:00

Regulation:  
Speed  
Load